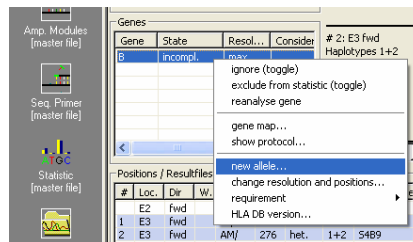


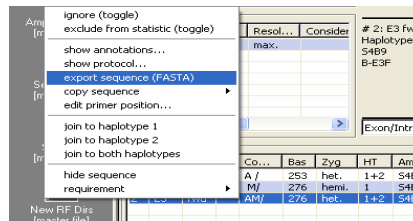
## Registration of new HLA-Alleles

Using the Sequence Pilot interpretation software new alleles confirm as mismatches in the presence of a clear analyzable sequence which can not be resolved. To make sure this mismatch represents a new allele you have to sequence the haplotype, the mismatch belongs to, two times minimum in forward and reverse orientation.

The first Step is to determine a new allele in Sequence Pilot program. Push with the right mouse bottom to the "incomplete" locus and choose "new allele". Allocating the new allele to haplotype 1 or 2 the state of analysis will return from incomplete to complete.



Afterwards you have to export the sequence of the new allele by pushing with the right mouse bottom to the corresponding resultfile and choosing „export sequence (FASTA)“. Save the sequence in a folder free of choice.



The first step of publishing new alleles is the registration and submission of sequence information. Therefore you have to send the sequence to a Nucleotide Sequence Database e.g. EMBL, Genbank or DDBJ.

In the course of registration a unique accession number is assigned by the database which permanently identifies the sequence submitted.

Please refer to the following Link how to register and submit the sequence information at EMBL- Nucleotid Sequence Database.

[http://www.ebi.ac.uk/embl/Documentation/information\\_for\\_submitters.html](http://www.ebi.ac.uk/embl/Documentation/information_for_submitters.html)

The accession number you received is required for the registration of the new allele at IMGT HLA- Database. All conditions required for acceptance of new allele sequences are described in the following Link.

[http://www.ebi.ac.uk/imgt/hla/subs/sub\\_guide.html](http://www.ebi.ac.uk/imgt/hla/subs/sub_guide.html)

Having registered at IMGT-HLA Database the new allele will be automatically include into the WHO HLA Database.

Here you will find some helpful Links for submission of sequence information and registration of new alleles.

**EMBL:** <http://www.ebi.ac.uk/Submissions/index.html>

**GenBank:** <http://www.ncbi.nlm.nih.gov/Genbank/index.html>

**DDBJ:** <http://www.ddbj.nig.ac.jp/sub-e.html>

<http://imgt.cines.fr/>

<http://www.ebi.ac.uk/embl/>